

192 Monton Road, Monton, Manchester, M30 9PY
Tel: 0161 707 7584
Email: monton.sales@ascendproperties.com,
monton.lettings@ascendproperties.com
www.ascendproperties.com

Ascend

Built on higher standards



Barton Quarter, Horwich, BL6

£1,350 PCM

Nestled within the heart of Horwich, Barton Quarter introduces an enticing collection of 3 and 4-bedroom homes to rent.

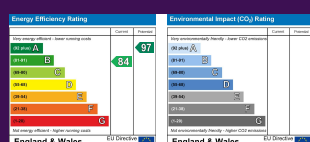
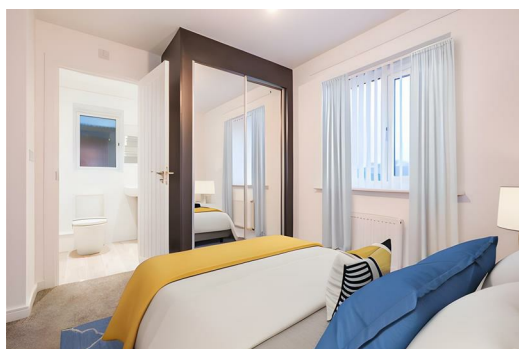
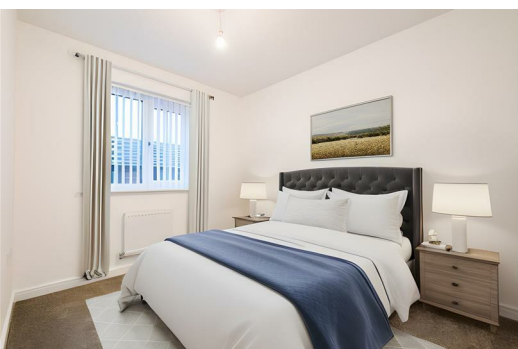
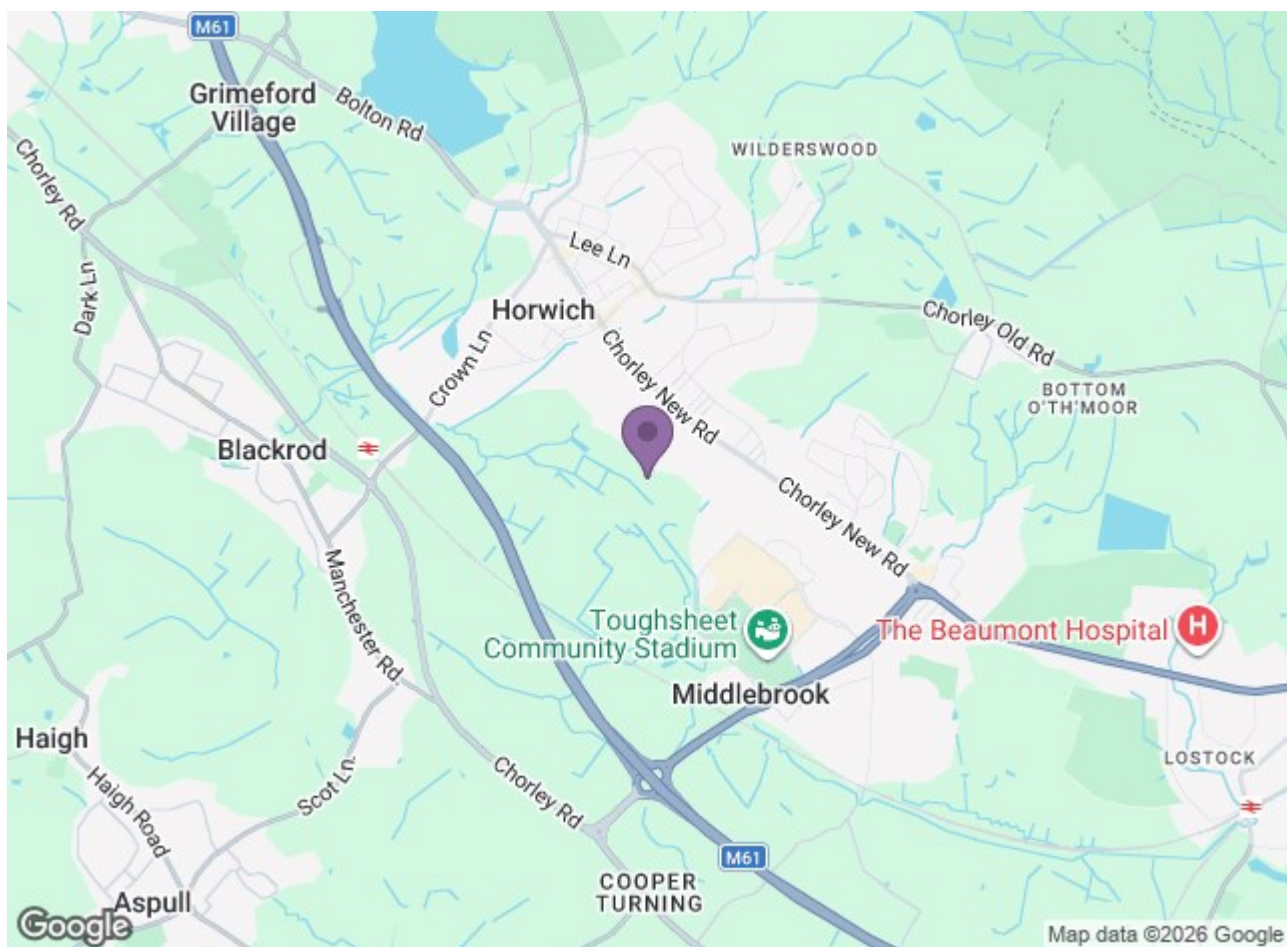
The Tailor is a contemporary 3-bedroom home thoughtfully designed with families in mind. As you step into the entrance, you'll appreciate the convenience of a strategically placed downstairs WC. The spacious front-facing living room is awash in natural light, courtesy of its captivating feature window.

This area seamlessly flows into the open-plan kitchen and dining space, adorned with modern and fresh worktops, cupboard spaces and integrated appliances. To enhance your living experience, French doors lead to the rear garden, effortlessly connecting your indoor and outdoor spaces.

Venturing upstairs, you'll find a generously proportioned master bedroom with its own ensuite bathroom, accompanied by another well-appointed double bedroom and a versatile single room suitable as a children's bedroom or home office. To top it all off, a modern and contemporary family bathroom adds the finishing touch to this welcoming home.

Not only this, the property comes with its own private parking space for added convenience!





Ascend
Built on higher standards